



Self fusing silicon tape ARLON TAPE GRAY

Not slippery in water !

TEMP.
-50~200°C

It's available for Air, Water,
Sea water, and Aux. steam.

DRINKING
WATER LINE
OK

Just wind while
pulling strongly !

You can stop leakage
under pressrue !



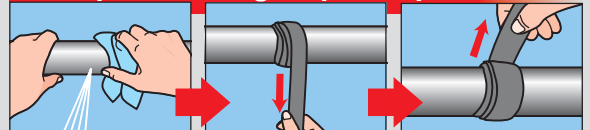
Arlon Tap Gray Repair example

When pulling strongly while winding it, the tapes will self-fuse, and they will adhere to broken parts such as piping and hose leakage, bleeding, pinholes and gaps.

Repeat to wind the tape until stop.

Since it does not adhere to piping, any material can be repaired.

Example of leakage repair of pinhole



Clean a repair spot.

Cut the tape to 20~30cm and overlap winding it while pulling strongly.

Complete if leakage stops. If it is still leaking, continue to overlap winding the tape until the leakage stops.



You can watch the detailed usage of this product on the video. Please scan the QR code.

Width 25mm / 38mm
Please use according to the pipe diameter.

ARLON TAPE GRAY

	Product size	Applicable dia.	Qty	JAN code
SRG-2	W 25 x L 2000mm	Under 50A	24	4560361000331
SRG-5	W 25 x L 5000mm	Under 50A	12	4560361000348
SRG-11	W 25 x L 11000mm	Under 50A	6	4560361000355
SRG-38	W 38 x L 6000mm	Under 100A	8	4560361000362

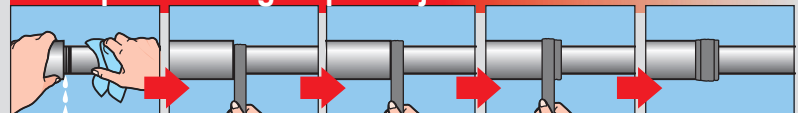
Material	Silicone rubber
Pressure	1.0MPa
Tensile strength	8.0MPa
Temperature	-50°C ~ 200°C
Coefficient of extension	600%

◆ Chemical resistance
○= Conformity ×= Non-conformity

10%Acetic acid	○
2%Nitric acid	△
10%Sulfuric acid	×
10%Hydracid	○
Acetone	×
Xylole	×
Gasoline	×
Methanol	○
Ethanol	○
Ammonia	△
Antifreeze	○

Approval of Food Sanitation Act No.370/201
Approval of JIS K6353(Rubber for water)
US military standard compliant goods (MIL-I-46852C)

Example of leakage repair of joint



Clean a repair spot.

Overlap winding the tape around a low level spot.

Continue until be a same level.

Overlap winding the tape around a leakage spot.

Complete !

- Press the end of the tape against it while pulling finally.
- Since it done not adhere to piping, the wound tapa can be easily removed with scissors.
- Recommend to combine it with Quick Tape or Rector Seal for protection after completion.
- It can be used in either direction on both sides.