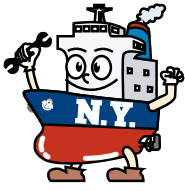


*Make your ship
Energetic!*





***We create the wonderful future by making
your ship energetic and uniting all the seas
and oceans around the world!***

MESSAGE

We, N.Y. Co., Ltd. founded in 1976 by Mr. YOSHIKAWA Noriyoshi who is our counselor / chairman now. He was a superintendent in shipping company and had experiences of duty on board as a chief engineer before establishing our company. He started his business handling marine equipment and spare parts with his well-experienced knowledge. His strong belief, “put ourselves in customer’s mind as an engineer” inherited to the present.

We have been able to be kept running our company due to tremendous support of our clients and vendors ever since we established. It would not succeed without our staff’s effort as well. Firm relationships between us and clients are huge network, and those are irreplaceable our assets by anything.

And I, YOSHIKAWA Shinya became a representative director in 2013. I am eager to provide best services to our customers more than ever, with my experiences of former work as plant engineer in construction and trial run at power plant. We will extend range of our business from offshore to onshore, with taking in new technology and it is our intention to accomplish.

I believe company is just like a home, which nurtures happiness to all of our staffs and their families. The happiness of our staffs and their families will certainly spread to company, customers, and finally to the society around us.

I will build more trust relationships between me and staffs, customers, and clients, to ensure long-term happiness. We also aim to make our company having more than 100 years history, and we will keep growing up to pass on to next generation.

We are always happy to meet any demands of customer as “a company which makes every ship energetic”.



PRESIDENT
YOSHIKAWA Shinya

COMPANY PROFILE

COMPANY NAME	N.Y. Co., Ltd.
ADDRESS	No.3 Toun Bldg., 1-13-10, Shibaura, Minato-ku, Tokyo 105-0023, Japan ✉ hd-office@ny-tokyo.com 🌐 https://www.ny-tokyo.com/en/
PHILIPPINES SATELLITE BRANCH	Rm 203 Casa Catalina Bldg., 635 General Malvar St. Malate, Manila, 1004, Metro Manila ☎ +63-918-9673669 ✉ honeyvg-ph@ny-tokyo.com
DATE OF ESTABLISHMENT	3rd, June, 1976
CAPITAL	¥30,000,000 (JPY)
PRESIDENT	YOSHIKAWA Shinya
COUNSELOR / CHAIRMAN	YOSHIKAWA Noriyoshi
EMPLOYEE	16 members ※as of April, 2024
MAIN BANKS	Sumitomo Mitsui Banking Corporation [Mita-Dori Branch] Resona Bank, Limited. [Tamachi Branch] The Shoko Chukin Bank, Ltd. [Tokyo Branch]
MEMBERSHIP	The Tokyo Chamber of Commerce and Industry Corporate Association of Shiba Japan Ship Machinery and Equipment Association
LICENCE	Tokyo Secondhand Dealer, No.301091604203 Employment Placement Businesses, No.13- 工 -310777 Worker Dispatching Undertakings, No. 派 -13-314063

COMPANY HISTORY

1976	JUN.	Established by chairman YOSHIKAWA Noriyoshi as a trading company of marine equipment and spares Capital: ¥2,000,000 (JPY)
1977	SEP.	Became an authorized agent of MIURA Co., Ltd. (Z-Boiler)
1993	JUN.	Increased capital to ¥10,000,000 (JPY)
2005	JUN.	Increased capital to ¥20,000,000 (JPY)
2011	JUL.	YOSHIKAWA Shinya assumed the executive director (From Mitsubishi Heavy Industries, Ltd.)
2013	MAR.	Relocated the office for expansion (No.3 Toun Bldg., 1-13-10, Shibaura, Minato-ku, Tokyo, Japan)
2013	JUN.	YOSHIKAWA Shinya assumed the president
2014	OCT.	Established a Manila office in Philippines
2016	APR.	Released first-aid kit, "SHiP+AiD"
2018	NOV.	Increased capital to ¥30,000,000 (JPY)
2022	APR.	Released new inboard service cart, "Beecele"

OUR SERVICE LINE-UP



- 🌐 Ship's equipment, spare parts, and store arrangement
*Details as handling makers list
- 🌐 Overseas products arrangement
*Details as handling makers list
- 🌐 Authorized agent
*Details as authorized agent list
- 🌐 Boiler and incinerator maintenance
- 🌐 Service engineer and repairing arrangement
- 🌐 Loading, unloading, and waste oil arrangement
- 🌐 Consignment and deliver on board arrangement in foreign countries
- 🌐 Agency service in Philippines
- 🌐 Secondhand machineries and spares arrangement
- 🌐 Temporary staff arrangement of engineer and superintendent

🌐 First-aid kit for your ship "SHiP+AiD"

SHiP+AiD prevents you from...

- Leakage of Piping (water, sea water, air, fuel..)
- Leakage of
 - Auxiliary steam plumbing
 - High temperature exhaust gas piping
 - High pressure hydraulic piping
- Crack of Expansion joint etc...



QR code for more details on YouTube!
<https://youtu.be/t7GZi0LWGeY>



🌐 New Inboard service cart "Beecler"

- Transport lashing belt at P.C.C.
- Reusing old golf car
- Zero emission by electric motor



QR code for more details on YouTube!
<https://youtu.be/fFdxHKEZFKE>



E-COMMERCE FOR SHIP OWNER "Watatumi"

- Place to order ship parts online
- Manages from order to delivery on board
- Always confirm prices & leadtime



READ MORE


<https://www.watatumi.com/en/>



AUTHORIZED AGENT

-  MIURA Co., Ltd.
 - Boiler •Incinerator •Fresh Water Generator
 - Ballast Water Management System

MIURA

-  Matsubara Iron Works Co., Ltd.
 - Compressor

株式会社 松原鐵工所

-  RWO
 - Oil Separator •Sewage Treatment Plant
 - Fresh Water Generator

RWO  **VEOLIA**

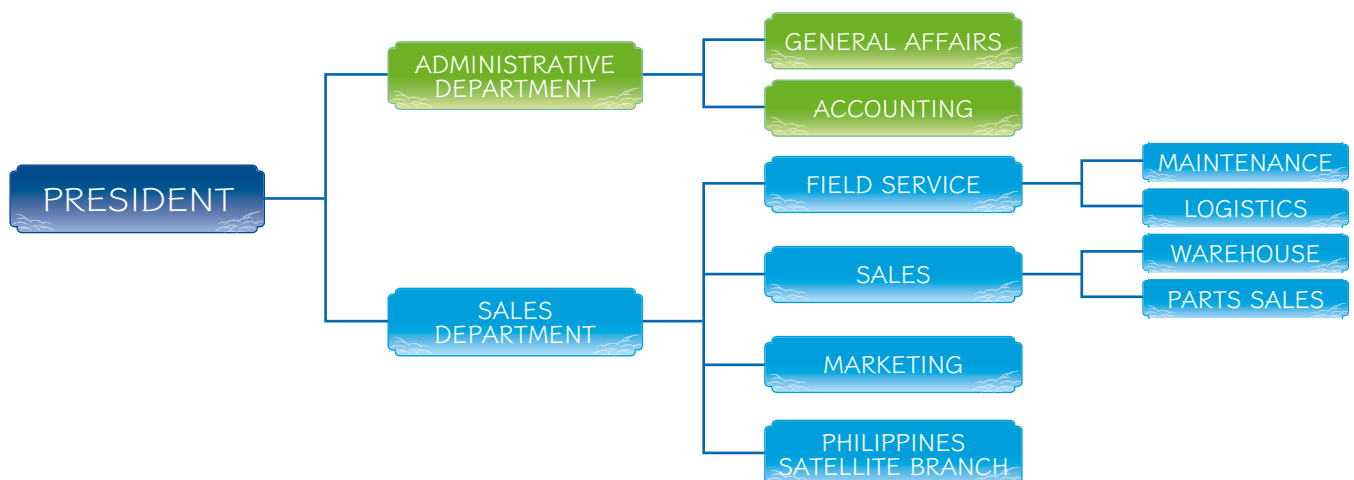
-  Peter Taboada
 - Reverse Osmosis Water Purification Systems

 **PETER TABOADA**
TECNOLOGÍA AVANZADA DEL AGUA

-  BROLICH
 - Power Measuring System

 **BROLICH**
MARINE ELECTRONIC ENGINEERING LTD.

ORGANIZATION CHART



HANDLING MAKERS

Color legend



►MAIN ENGINE / GENERATOR / TURBOCHARGER

AKASAKA DIESEL JFE ◎ HANSHIN DIESEL CATERPILLAR JAPAN LLC	IHI TURB SYSTEMS UNITED KANADEVIA ◎ MITSUBISHI(MHI)	KAWASAKI(KHI) DAIHATSU INFINEARTH MFG IMEX	◎ YANMAR DIESEL UNITED ◎ MAKITA	JAPAN ENGINE CORPORATION IHI POWER SYSTEMS MITSUI E&S
DAEWOO	DOOSAN	HYUNDAI / HiMSEN	SAMSUNG	STX
SHANGHAI MARINE DIESEL ENGINE CHONGQING CUMMINS ENGINE	DALIAN MARINE DIESEL SHAANXI DIESEL ENGINE	ANQING CSSC DIESEL ENGINE L'ORANGE FUEL INJECTION	CSSC MARINE POWER	HENAN DIESEL ENGINE
DEUTZ MWM SEMT SULZER	MAK BERGEN PIELSTIC	MAN WARTSILA CREPELLE	MAN B&W VOLVO PENTA CAT	◎MTU ROLLS-ROYCE

►SHAFTING / PROPELLOR

KAMOME PROPELLER NAKABOHEC	KEMEL(EAGLE) PILLAR	STERN KEEPER NIPPON CORROSION ENGINEERING	TRATEC WÄRTSILÄ IN JAPAN	NAKASHIMA PROPELLER
-------------------------------	------------------------	--	-----------------------------	---------------------

►AUXILIARY BOILER / INCINERATOR

IHI VOLCANO	ALFA LAVAL ◎ MIURA	OSAKA BOILER MITSUI E&S	KAWASAKI(KHI) MITSUBISHI(MHI)	SUNFLAME
KANGRIM	DONGWHA ENTEC			
NANJING LVZHOU MACHINERY	HANSUN MARINE TECHNOLOGY	ZHANGJIAGANG GREENS SHAZHOU	JIANGSU NANJI MACHINERY	
SAACKE	TEAM TEC	ALFA LAVAL (AALBOLG)		

►PUMP

ISHII SHINKO TEIKOKU	EBARA DAIICHI SEISAKUSYO NANIWA	ELEPON ◎ TAIKO NIPPON OIL	KASHIWA TECH DAITO HSN-KIKAI KOGYO	SANKO ENG. TSURUMI HEISHIN
SHIN SHIN MACHINERY	JIANGSU ZHEN HUA PUMP	TIANJIN PUMPS & MACHINERY		
ALLWEILER SEEPEX LEISTRITZ	BORNEMANN GRUNDFOS SPECK HERBORNER	NETZSCH-MOHNO KSB RICKMEIER	IMO KRAL HAMWORTHY	THUNE EUREKA BEHRENS ◎ 3P PRINZ

►COMPRESSOR

SANWA ◎ YANMAR	SUCTION GAS ENGINE	TANABE	TEIKOKU	◎ MATSUBARA
HI AIR KOREA	BUMHAN COMPRESSOR			
SPERRE TMC TAMROTOR	◎ SAUER & SOHN ATLAS COPCO	HATLAPA BAUER	SABROE BOCK	HAMWORTHY BITZER

►HEAT EXCHANGER / HEATER / REFRESH WATER

◎ ALFA LAVAL HISAKA	SASAKURA ◎ MIURA	SHOWA YAMASHINA	SETOUCHI	TAISEI
ALFA LAVAL UEBERALL	JOWA ◎PETER TABOADA	SONDEX	SERCK COMO	EVAC

►PURIFIER / OIL SEPARATOR

AMERIOD ◎ TAIKO BALLFILTER JAPAN	◎ ALFA LAVAL NIIKURA	GEA JAPAN HSN-KIKAI KOGYO	KANAGAWA KIKI KOGYO ◎ MITSUBISHI KAKOKI	SASAKURA ◎ SELECT
SAMGONG	SSANGYONG	YOOWON		
HANSUN MARINE TECHNOLOGY	NANTONG NAVIGATION MACHINERY			
ALFA LAVAL WESTFALIA	DVZ OCEAN CLEAN	B+V TURBULO BALL & KIRCH	◎ RWO MOATTI	MAHLE NFV MANN+HUMMEL

►DECK MACHINERY

IHI FUKUSHIMA	BOSCH REXROTH MAROL	KAWASAKI(KHI) MANSEI	SEKIGAHARA MITSUBISHI(MHI)	NIPPON PUSNES
YOOWON	DONGNAM ENTERPRISE			
WUHAN MARINE MACHINERY	ZHENJIANG MARINE AUX.MACH.	SOUTH CHINA MARINE MACHINERY		

►HATCH COVER / ACCOMODATION LADDER / PILOT LADDER

MACGREGOR JAPAN	KYORITSU	NAKATA MAC	NAKANO	YASHIO
JUNG-A MARINE	SAMGONG			
TTS HUA HAI SHIPS EQUIPMENT				

►ELECTRIC ANTICORROSION / ANODE / MARINE GROWTH PREVENTION

CHUO-KOSAN KC	TRATEC	NAKABHOTEC	NIPPON CORROSION	MITSUBISHI MATERIALS
------------------	--------	------------	------------------	----------------------

►LIFE BOAT / LIFE SAVING RAFT

SHIGI	TSUNEISHI FACILITIES&CLAF	NISHIEFU
-------	---------------------------	----------

ZHENJIANG MARINE

►REFRIGERATOR / AIR CONDITIONER

USHIO REINETSU	JOHNSON CONTROLS	DAIKIN	TAKAGI REFRIGERATING	TOYO ENGINEERING
NISSHIN REFRIGERATION	MAEKAWA	MITUI E&S	MITSUBISHI	

HI AIR KOREA

►KITCHEN EQUIPMENTS / ACCOMMODATIONMP

USHIO REINETSU	SAKAE SENPAKU DENKI	SANWA CHURI	NIPPON CONTROLS	FUJIMAK
HOSHIZAKI	MITSUBOSHI CHUKI	WASHIO CHURI		

►CONTROL EQUIPMENT & ELECTRIC

◎ AZBIL	BEMAC	EIWA	OMRON	SAGINOMIYA
SANSHIN ELEC.	SINFONIA TECHNOLOGY	TAIYO ELEC.	TOKYO KEIKI	NISHISHIBA ELEC.
NIPPON HAKUYO KEIKI	NUNOTANI HAKUYO KEIKI	HITACHI	FUJI ELEC.	MITSUBISHI ELEC.
YASUKAWA ELEC.	◎ NIHON SEIKI KOGYO	YOKOKAWA ELEC.		

PAN-ASIA HANSHIN ELEC. SAMGONG

VARIO	ABB	AEG	EATON	SIEMENS
TRAFAG				

►COMMUNICATION & NAVIGATION EQUIPMENT

IBUKI KOGYO	EIWA	KURAMOTO INSTRUMENT	DAIKO KEIKI	TOKYO KEIKI
JAPAN RADIO	NUNOTANI HAKUYO KEIKI	FURUNO ELEC.	YDK TECHNOLOGIES	

SARACOM MARINE RADIO SAMGONG

►MEASURING INSTRUMENT

EIWA	KOBATA GAUGE	SAGINOMIYA	SANKYO	SIEMENS
SEMCO	DANFOSS	TOKYO KEIKI	TOKICO SYSTEM SOLUTIONS	NAKAKITA SEISAKUSYO
NAGANO KEIKI	NITTO SIEKO	MEIYO ELEC.	RIKEN KEIKI	

PAN-ASIA HANLA LEVEL

JIANGSU YUANWANG INSTRUMENT

NORIS	AUTRONICA	ENDRESS+HAUSER	SIEMENS	ENRAF
VALCOM	VEGA	SIKA	LEUTERT	DANFOSS
SAUTER	◎ BROLICH			

►DISASTER PREVENTION & LIFE PRESERVER

NIPPON DRY-CHEMICAL	AIR WATER SAFETY SERVICE	KOA KAKO	DRAEGER SAFETY JAPAN	NITTAN
NOHMI BOSAI	YAMATO PROTEC			

NK FIRE PROTECTION

KIDDE	APPOLO	SALWICO	DRAEGER	TYCO
DIANIMANT				

►CHEMICAL / ADDITIVE

KURITA	◎ MIURA	UNITOR	◎ LUBRICON	ICHINEN CHEMICALS
NIPPON YUKA KOGYO				

►OTHERS

◎ TOMOE VALVE	◎ OKM	HAGIWARA VALVE	MIYAIRI VALVE MFG	YUKEN KOGYO
ANCHOR/CHAIN	WIRE/ROPE	BERT/ROLLER(BELT CONVEYOR)	ALL SORTS OF PAINT	SET OF ARTICLES FOR SHIPS

HALLA AUTOMATIC VALVE

※Above are only part of our handling makers, please contact us for not-listed makers.



株式会社

N.Y. CO., LTD. SINCE 1976

エネジー

~ Make your ship Energetic! ~

With our dreams & hopes,
We keep moving forward!

