

Matsubara

[Dealer]



N.Y. CO., LTD. MAKE A SHIP ENERGETIC !

No.3 Toun Bldg., 1-13-10, Shibaura
Minato-Ku, Tokyo, 105-0023, Japan
Tel +81-3-6809-4540 Fax +81-3-6809-4541
E-mail hd-office@ny-tokyo.com
URL <http://www.ny-tokyo.com>

WATER COOLED AIR COMPRESSORS

ESTABLISHED 1904

MATSUBARA IRON WORKS LTD.

OSAKA JAPAN



AIR COMPRESSORS

for starting Diesel engine, marine and land

We, Matsubara Iron Works Ltd., was established in 1904, and manufactured semi-diesel marine engines, clutches and chain blocks.

In 1941 we started developing high pressure air compressors. Through our long history of more than 100 years, we have got rich experience and excellent technique. Until 2007, more than 49,800 units of our compressors were rushed into good working in Japan and abroad.

Now, air compressors are in our delighted main line. They are ranging 2.1-29.4kW and working on cargo-boats, passenger's, patrol's, tankers, fishing boats and land power plants.

We are also manufacturing 15-30MPa (150-300kgf/cm²) air compressors.

Features

The structure guarantees high durability and easy maintenance.

With unique high-efficiency valves, excellent performance is assured.

Ship's classifications

Our air compressors have been mounted on following certified boats:

AB, BV, KR, LR and NK.

Driving method

Direct driving with motor through coupling (automatic or manual start/stop)

Optional equipment

Following accessories will be equipped at your request.

Signal device for cooling water shortage.

Signal device for high cooling water temperature.

Signal device for running.

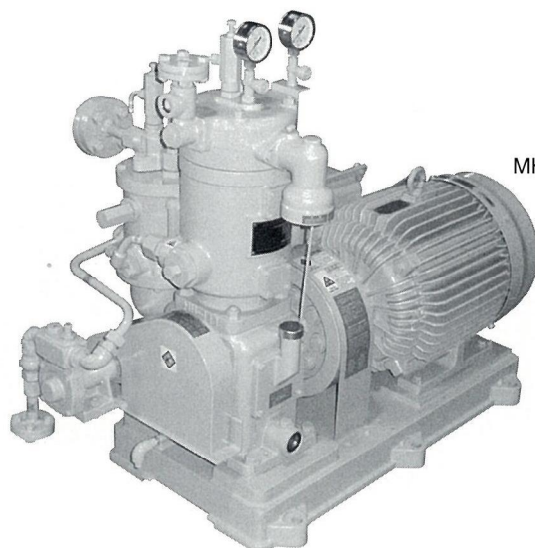
Signal device for low level of lubricating oil.

Automatic feed oil device.

Cooling water magnetic valve for preventing overcooling.



MS64B



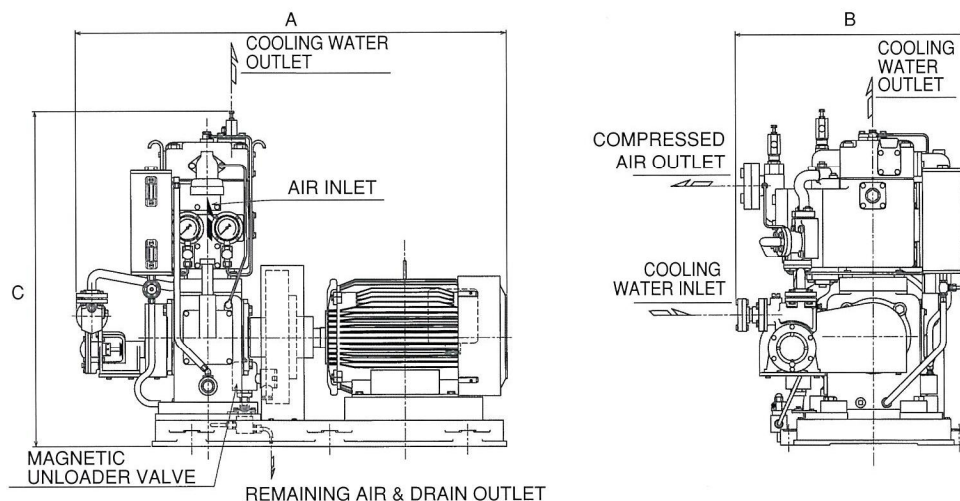
MH111

SPECIFICATIONS

Water cooled, vertical 2-stage.

Model	No. of cylinder	Pressure MPa	Piston displacement/Free air m ³ /h	Revolutions min ⁻¹	Power required kW
MS64B	1	3 MPa (30kgf/cm ²)	11.5 / 6.9 13.8 / 8.2 17.3 / 9.5 20.7 / 11.5	1000 1200 1500 1800	2.1 2.2 3.0 3.7
MS70	1		18.1 / 11.0 21.7 / 13.0	1000 1200	3.2 3.7
MS70K	1		27.1 / 15.0 32.6 / 18.0	1500 1800	4.4 5.5
MS85	1		34.0 / 22.0 40.8 / 26.0	1000 1200	6.3 7.5
MS85K	1		51.0 / 30.0 61.2 / 34.0	1500 1800	9.1 10.7
MH108	1		52.1 / 35.0 58.1 / 37.8 69.5 / 45.0	900 1000 1200	9.2 9.9 11.0
MH111	1		61.6 / 41.5 68.4 / 44.5 82.0 / 53.0	900 1000 1200	11.0 12.1 14.4
MH114A	1		76.0 / 52.0 85.0 / 57.0 101.0 / 65.0	900 1000 1200	13.3 14.8 17.4
MH120A	1		85.0 / 57.0 102.0 / 68.0	750 900	15.1 17.7
MH120K	1		113.2 / 73.5 135.8 / 85.0	1000 1200	18.8 22.0
MH130A	1		102.0 / 68.0 122.0 / 81.0	750 900	17.7 21.0
MH150A	1		127.5 / 85.0 153.0 / 102.0	750 900	21.9 25.7
MH160A	1		153.0 / 102.0 184.0 / 123.0	750 900	26.1 29.4

Design and specifications may be changed without notice.



STANDARD DIMENSIONS

Model	A	B	C	Compressed air outlet	Cooling water inlet & outlet	Motor output	Weight [kg] (Approx)
MS64B	650	480	692	6A STPG	φ12 C1220	2.2kW 6P 3.7kW 4P	120
MS70 MS70K	810	480	772	8A STPG	φ12 C1220	3.7kW 6P 5.5kW 4P	180
MS85 MS85K	930	540	790	8A STPG	φ15 C1220	7.5kW 6P 11kW 4P	245
MH108	1130	610	910	10A STPG	φ15 C1220	11kW 6P	380
MH111	1160	610	915	10A STPG	φ15 C1220	15kW 6P	440
MH114A	1210	660	995	15A STPG	φ15 C1220	18.5kW 6P	525
MH120A MH120K	1430 1350	730	1075	32A STPG	25A SGP	18.5kW 8P 22kW 6P	695 630
MH130A	1430	730	1105	32A STPG	25A SGP	22kW 8P	780
MH150A	1530	855	1235	32A STPG	25A SGP	26kW 8P	885
MH160A	1530	855	1250	32A STPG	25A SGP	30kW 8P	930

MATSUBARA IRON WORKS LTD.

Head Office : 10th FL, Shin-Osaka Sun Earl Bldg., Kitakan, 8-3, Nishinakajima 5-chome, Yodogawa-ku, Osaka, Japan.

Tokyo Office : 4th FL, No.2 Arakawa Bldg., 1-3, Kyobashi 2-chome, Chuo-ku, Tokyo, Japan.

Shiga Factory : 1500-46, Shibaharaminami-cho, Higashiomi City, Shiga Pref., Japan.

TEL.06-6304-7780 FAX.06-6304-7854

TEL.03-3243-0413 FAX.03-3243-0415

TEL.0748-22-1313 FAX.0748-22-1316