

Epoxy Putty

RECTOR SEAL

All-purpose putty



TEMP.
-40~200°C

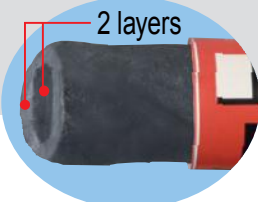
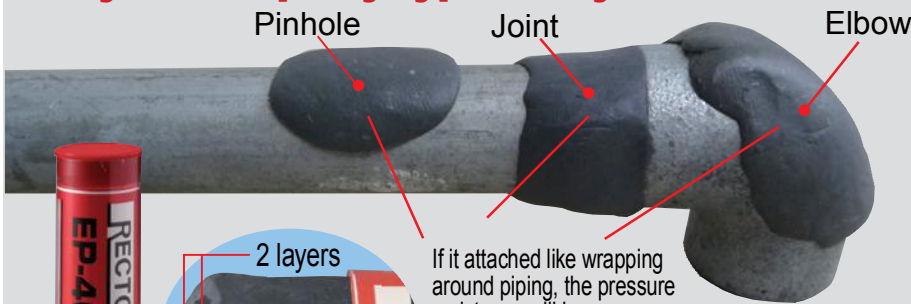
Tough & Durable !

Harden like a metal in **15~20min** after kneading.

Just cut and knead it

Easy to use putty type everywhere

**DRINKING
WATER LINE
OK**



If it attached like wrapping around piping, the pressure resistance will increase.

This product has layers of two components, combining by kneading and hardening.

Joint



EP-400



EP-200



EP-200W



EP-200 (24pcs)

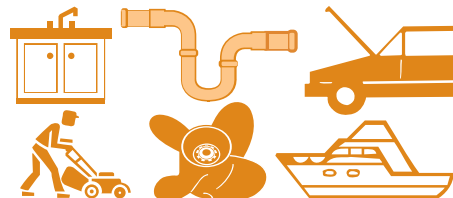


EP-400 (12pcs)



The use is diverse, such as repairing holes and cracks, reforming the surface.

- ◆ Piping (Stainless, Copper, Steel, PVC)
- ◆ Air conditioner (Duct, Unit, Fan)
- ◆ Electrical machinery (Housing motor, Shaft)
- ◆ Industry (Equipment, Pump casing)
- ◆ Car (Oil tank, Engine block, Fan, Muffler, Oil pan, Radiator)
- ◆ Shipping (Hull, Piping, Pump casing)
- ◆ Agriculture (Tools, Machinery)
- ◆ DIY (Tile, Wall, Piping, Cabinet, Door)



RECTOR SEAL

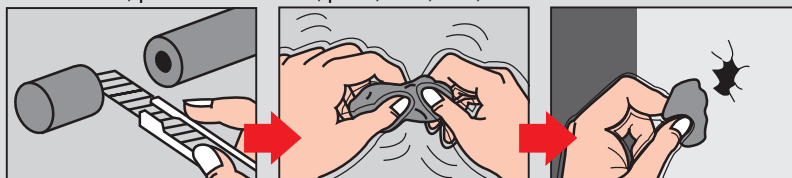
	EP-200	EP-200W	EP-400
Contents	56g	56g	112g
Color	Gray	White	Gray
Material	Epoxy resin		
Hardness	Shore D85		
Temperature	-40~200°C		
Pressure	10kg/cm ²		
Tensile strength	420kg/cm ²		
Compressive strength	1,260kg/cm ²		
Elastic coefficient	6×10 ⁹ PSI		
Shear strength	49kg/cm ²		
Insulation properties	400Volts/mil 0.125in		
Volume resistance	5×10 ¹⁵ Ω·cm		
JAN code	4560361000010	4560361000034	4560361000041

◆ Chemical resistance
○=Conformity ×=Non-conformity

10%Acetic acid	○
2%Nitric acid	○
10%Sulfuric acid	○
10%Hydroic acid	○
Acetone	○
Xylole	○
Gasoline	○
Methanol	○
Ethanol	○
10%Hydrochloric acid	○
Caustic soda	○

<How to use>※ Please repair under non-pressure.

※ First of all, please remove dirt, paint, dust, rust, oil etc. on the adhesion surface.



- ① Remove the packaging film and cut it in the required amount.
- ② Knead it for 1~2mins until there is no color unevenness.
- ③ Embed and mold so as to press against the adhesive / filling spot.

- ※ If you use a wet cloth or wet spatula, it will be beautiful finished.
- ※ When the temperature is low, the time to complete hardening becomes longer. Please use at temperature above 5°C.
- ※ Please be careful as excessive kneading and redoing of molding after adhesion will cause poor adhesion and poor hardening.
- ※ Recommend to combine with Quick Tape and Arlon Tape for piping repair.
- Cover Rector Seal by Quick Tape for additional strength.
- Cover Arlon Tape by Rector Seal for protection.
- ④ Harden and adhere in 15~20mins. It can be done tapping, buffing, painting and etc. after completed hardening (1 hour)