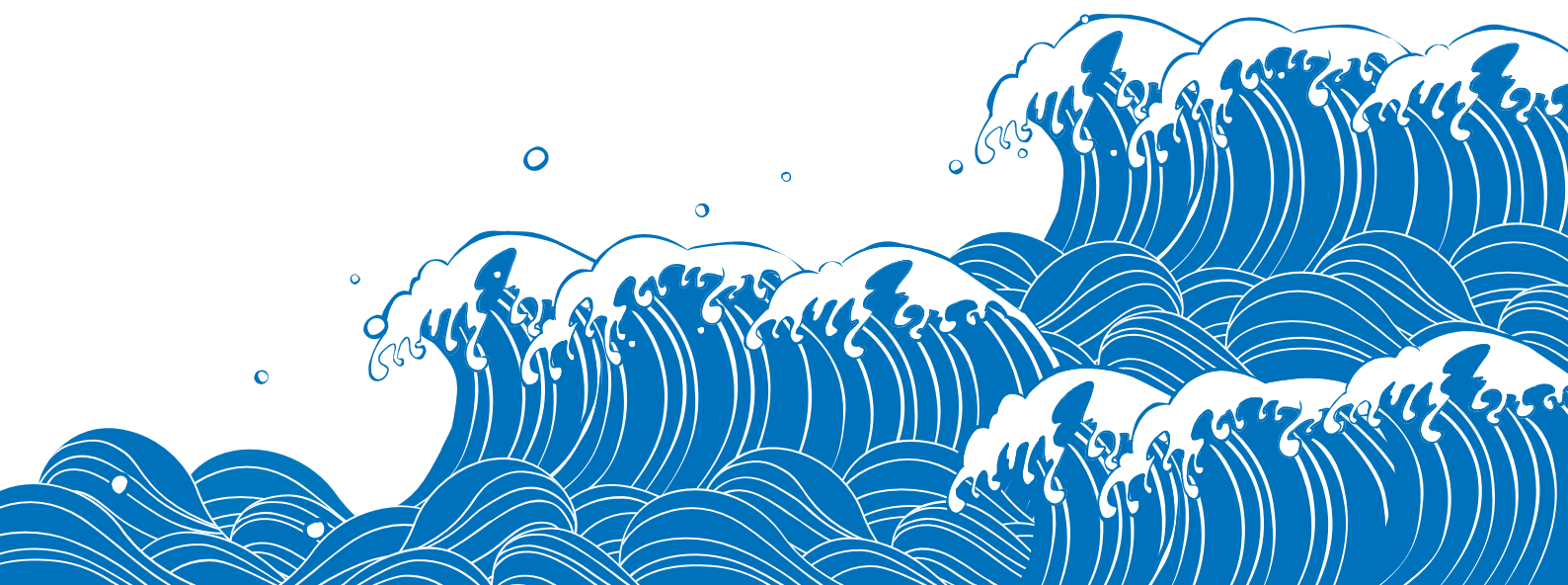
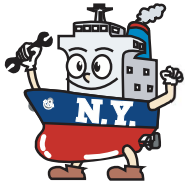


*Make your ship
Energetic!*





***We create the wonderful future by making
your ship energetic and uniting all the seas
and oceans around the world!***

MESSAGE

We, N.Y. Co., Ltd. founded in 1976 by Mr. YOSHIKAWA Noriyoshi who is our counselor / chairman now. He was a superintendent in shipping company and had experiences of duty on board as a chief engineer before establishing our company. He started his business handling marine equipment and spare parts with his well-experienced knowledge. His strong belief, "put ourselves in customer's mind as an engineer" inherited to the present.

We have been able to be kept running our company due to tremendous support of our clients and vendors ever since we established. It would not succeed without our staff's effort as well. Firm relationships between us and clients are huge network, and those are irreplaceable our assets by anything.

And I, YOSHIKAWA Shinya became a representative director in 2013. I am eager to provide best services to our customers more than ever, with my experiences of former work as plant engineer in construction and trial run at power plant. We will extend range of our business from offshore to onshore, with taking in new technology and it is our intention to accomplish.

I believe company is just like a home, which nurtures happiness to all of our staffs and their families. The happiness of our staffs and their families will certainly spread to company, customers, and finally to the society around us.

I will build more trust relationships between me and staffs, customers, and clients, to ensure long-term happiness. We also aim to make our company having more than 100 years history, and we will keep growing up to pass on to next generation.

We are always happy to meet any demands of customer as "a company which makes every ship energetic".



PRESIDENT
YOSHIKAWA Shinya

COMPANY PROFILE

COMPANY NAME	N.Y. Co., Ltd.
ADDRESS	No.3 Toun Bldg., 1-13-10, Shibaura, Minato-ku, Tokyo 105-0023, Japan
	✉ hd-office@ny-tokyo.com
	🌐 https://www.ny-tokyo.com/en/
PHILIPPINES SATELLITE BRANCH	319-A Ermita Center Bdg., 1350 Roxas Blvd., Ermita, Manila
	☎ +63-918-9673669
	✉ honeyvg-ph@ny-tokyo.com
DATE OF ESTABLISHMENT	3rd, June, 1976
CAPITAL	¥30,000,000 (JPY)
PRESIDENT	YOSHIKAWA Shinya
COUNSELOR / CHAIRMAN	YOSHIKAWA Noriyoshi
EMPLOYEE	14 members ※as of April,2023
MAIN BANKS	Sumitomo Mitsui Banking Corporation [Mita-Dori Branch]
	Resona Bank, Limited. [Tamachi Branch]
	The Bank of Yokohama, Ltd. [Shinagawa Branch]
	The Shoko Chukin Bank, Ltd. [Tokyo Branch]
MEMBERSHIP	The Tokyo Chamber of Commerce and Industry
	Corporate Association of Shiba
	Japan Ship Machinery and Equipment Association
LICENCE	Tokyo Secondhand Dealer, No.301091604203
	Employment Placement Businesses, No.13-コ-310777
	Worker Dispatching Undertakings, No.派-13-314063

COMPANY HISTORY

1976 JUN.	Established by chairman YOSHIKAWA Noriyoshi as a trading company of marine equipment and spares
	Capital: ¥2,000,000 (JPY)
1977 SEP.	Became an authorized agent of MIURA Co.,Ltd. (Z-Boiler)
1993 JUN.	Increased capital to ¥10,000,000 (JPY)
2005 JUN.	Increased capital to ¥20,000,000 (JPY)
2011 JUL.	YOSHIKAWA Shinya assumed the executive director (From Mitsubishi Heavy Industries, Ltd.)
2013 MAR.	Relocated the office for expansion (No.3 Toun Bldg., 1-13-10, Shibaura, Minato-ku, Tokyo, Japan)
2013 JUN.	YOSHIKAWA Shinya assumed the president
2014 OCT.	Established a Manila office in Philippines
2016 APR.	Released first-aid kit, "SHiP+AiD"
2018 NOV.	Increased capital to ¥30,000,000 (JPY)
2022 APR.	Released new inboard service cart, "Beele"

OUR SERVICE LINE-UP



- Ship's equipment, spare parts, and store arrangement
*Details as handling makers list
- Overseas products arrangement
*Details as handling makers list
- Authorized agent
*Details as authorized agent list
- Boiler and incinerator maintenance
- Service engineer and repairing arrangement
- Loading, unloading, and waste oil arrangement
- Consignment and deliver on board arrangement in foreign countries
- Agency service in Philippines
- Secondhand machineries and spares arrangement
- Temporary staff arrangement of engineer and superintendent

First-aid kit for your ship "SHiP+AiD"

SHiP+AiD prevents you from...

- Leakage of Piping (water, sea water, air, fuel..)
- Leakage of
 - Auxiliary steam plumbing
 - High temperature exhaust gas piping
 - High pressure hydraulic piping
- Crack of Expansion joint etc...



QR code for more details on YouTube!

URL: <https://www.youtube.com/watch?v=t7GZi0LWGeY>



New Inboard service cart "Beecler"

- Transport lashing belt at P.C.C.
- Reusing old golf car
- Zero emission by electric motor







QR code for more details on YouTube!

URL: <https://www.youtube.com/watch?v=fFdxHKEZFKE>



AUTHORIZED AGENT

- 
MIURA Co., Ltd.
 - Boiler •Incinerator •Fresh Water Generator
 - Ballast Water Management System
- 
Matsubara Iron Works Co., Ltd.
 - Compressor
- 
RWO
 - Oil Separator •Sewage Treatment Plant
 - Fresh Water Generator
- 
Peter Taboada
 - Reverse Osmosis Water Purification Systems
- 
BROLICH
 - Power Measuring System

MIURA

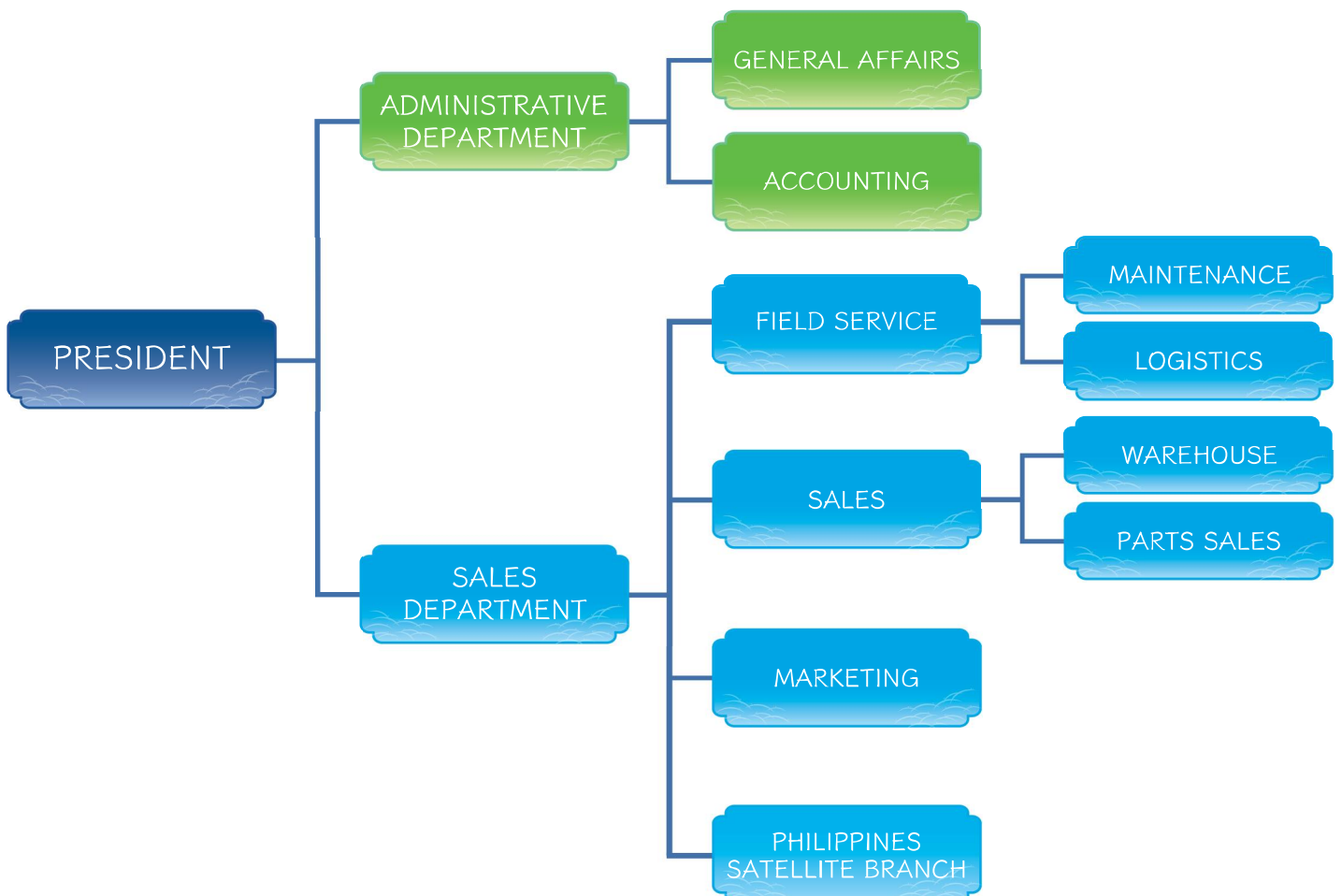
株式会社 松原鐵工所

RWO  **VEOLIA**

 **PETER TABOADA**
ADVANCED WATER TECHNOLOGY
TECNOLOGIA AVANZADA DEL AGUA

 **BROLICH**
MARINE ELECTRONIC ENGINEERING LTD.

ORGANIZATION CHART



HANDLING MAKERS

Color legend



JAPAN



KOREA



CHINA



EUROPE

► MAIN ENGINE / GENERATOR /TURBO CHARGER

AKASAKA DIESEL	HITACHI	JAPAN ENGINE CORPORATION	◎ MITSUBISHI(MHI)	TURB SYSTEMS UNITED
CATERPILLAR JAPAN LLC	◎ HANSHIN DIESEL	JFE	◎ MITSUI	◎ YANMAR
DAIHATSU DIESEL	IHI	KAWASAKI(KHI)	NIIGATA POWER SYSTEMS	
DIESEL UNITED	IMEX	◎ MAKITA		
DAEWOO	DOOSAN	HYUNDAI / HiMSEN	SAMSUNG	STX
SHANGHAI MARINE DIESEL ENGINE	DALIAN MARINE DIESEL	ANQING CSSC DIESEL ENGINE	CSSC MARINE POWER	HENAN DIESEL ENGINE
CHONGQING CUMMINS ENGINE	SHAANXI DIESEL ENGINE	L'ORANGE FUEL INJECTION		
DEUTZ MWM	MAK	MAN	MAN B&W	◎MTU
SEMT	BERGEN	WARTSILA	VOLVO PENTA	ROLLS-ROYCE
SULZER	PIELSTIC	CREPELLE	CAT	

► SHAFTING / PROPELLOR

KAMOME PROPELLER	NAKABOHEC	NIPPON CORROSION ENGINEERING	STERN KEEPER	WÄRTSILÄ IN JAPAN
KEMEL(EAGLE)	NAKASHIMA PROPELLER	NIPPON PILLAR PACKING	TRATEC	

► AUXILIARY BOILER / INCINERATOR

ALFA LAVAL	AWASAKI(KHI)	◎ MITSUI	OSAKA BOILER	VOLCANO
IHI	◎ MIURA	MITSUBISHI(MHI)	SUNFLAME	
KANGRIM	DONGWHA ENTEC			
NANJING LVZHOU MACHINERY	HANSUN MARINE TECHNOLOGY	ZHANGJIAGANG GREENS SHAZHOU	JIANGSU NANJI MACHINERY	
SAACKE	TEAM TEC	ALFA LAVAL (AALBOLG)		

► PUMP

DAITO	ELEPON	ISHII	NIPPON OIL	◎ TAIKO
DAIICHI SEISAKUSYO	HEISHIN	KASHIWA	SANKO ENG.	TSURUMI
EBARA	HSN-KIKAI KOGYO	NANIWA	SHINKO	TEIKOKU
SHIN SHIN MACHINERY	JIANGSU ZHEN HUA PUMP	TIANJIN PUMPS & MACHINERY		
ALLWEILER	BORNEMANN	NETZSCH-MOHN	IMO	THUNE EUREKA
SEEPLEX	GRUNDFOS SPECK	KSB	KRAL	BEHRENS
LEISTRITZ	HERBORNER	RICKMEIER	HAMWORTHY	◎ 3P PRINZ

► COMPRESSOR

◎ MATSUBARA	SUCTION GAS ENGINE	TANABE	TEIKOKU	◎ YANMAR
SANWA				
HI AIR KOREA	BUMHAN COMPRESSOR			
SPERRE	◎ SAUER & SOHN	HATLAPA	SABROE	HAMWORTHY
TMC TAMROTOR	ATLAS COPCO	BAUER	BOCK	BITZER

► HEAT EXCHANGER / HEATER / FRESH WATER GENERATOR

◎ ALFA LAVAL	◎ MIURA	SETOUCHI	TAISEI	YAMASHINA
HISAKA	SASAKURA	SHOWA		
ALFA LAVAL	JOWA	SONDEX	SERCK COMO	EVAC
UEBERALL	◎PETER TABOADA			

► PURIFIER / OIL SEPARATOR

AMERIOD	GEA JAPN	KANAGAWA KIKI KOGYO	NIKURA	SASAKURA
◎ ALFA LAVAL	HEISHIN	◎ MITSUBISHI KAKOKI	◎ SELECT	◎ TAIKO
BALLFILTER JAPAN				
SAMGONG	SSANGYONG	YOOWON		
HANSUN MARINE TECHNOLOGY	NANTONG NAVIGATION MACHINERY			
ALFA LAVAL	DVZ	B+V TURBULO	◎ RWO	MAHLE NFV
WESTFALIA	OCEAN CLEAN	BALL & KIRCH	MOATTI	MANN+HUMMEL

► DECK MACHINERY

FUKUSHIMA	KAWASAKI(KHI)	MANSEI	NIPPON PUSNES	UCHIDA
IHI	MAROL	MITSUBISHI(MHI)	SEKIGAHARA	
YOOWON	DONGNAM ENTERPRISE			
WUHAN MARINE MACHINERY	ZHENJIANG MARINE AUX.MACH.	SOUTH CHINA MARINE MACHINERY		

► HATCH COVER / ACCOMMODATION LADDER / PILOT LADDER

KYORITSU	MACGREGOR JAPAN	NAKATA MAC	NAKANO	YASHIO
JUNG-A MARINE	SAMGONG			
TTS HUA HAI SHIPS EQUIPMENT				

► **ELECTRIC ANTICORROSION / ANODE / MARINE GROWTH PREVENTION**

CHUO-KOSAN KC	mitsubishi materials	NAKABHOTEC	NIPPON CORROSION	TRATEC
------------------	----------------------	------------	------------------	--------

► **LIFE BOAT / LIFE SAVING RAFT**

NISHIEFU	SHIGI	TSUNEISHI FACILITIES&CLAFT
----------	-------	----------------------------

ZHENJIANG MARINE

► **REFRIGERATOR / AIR CONDITIONER**

DAIKIN	MAEKAWA	MITSUBISHI	TOYO ENGINEERING	USHIO REINETSU
JOHNSON CONTROLS	MITUI ZOSEN MACHINERY	NISSHIN REFRIGERATION	TAKAGI REFRIGERATING	

HI AIR KOREA

► **KITCHEN EQUIPMENTS / ACCOMMODATION**

USHIO REINETSU	SAKAE SENPAKU DENKI	SANWA CHURI	NIPPON CONTROLS
HOSHIZAKI ELEC.	MITSUBISHI CHUKI	WASHIO CHURI	

► **CONROL EQUIPMENT & ELECTRIC**

◎ AZBIL	MITSUBISHI ELEC	NUNOTANI HAKUYO KEIKI	SINFONIA TECH.	YASUKAWA ELEC.
EIWA	NIHON SEIKI KOGYO	OMRON	TAIYO ELEC.	YOKOKAWA ELEC.
FUJI ELEC.	NIPPON HAKUYO KEIKI	SAGINOMIYA	TOKYO KEIKI	
HITACHI	NISHISHIBA ELEC.	SANSHIN ELEC.	UZUSHIO ELEC.	

PAN-ASIA HANSHIN ELEC SAMGONG

VARIO	ABB	AEG	EATON	SIEMENS
TRAFAG				

► **COMMUNICATION & NAVIGATION EQUIPMENT**

DAIKO KEIKI	FURUNO ELEC	JAPAN RADIO	NUNOTANI HAKUYO KEIKI	YOKOKAWA DENSHIKIKI
EIWA	IBUKI KOGYO	KURAMOTO INSTRUMENT	TOKYO KEIKI	

SARACOM MARINE RADIO

► **MEASURING INSTRUMENT**

DANFOSS	KOBATA GAUGE	NAKAKITA SEISAKUSYO	SANKYO	TOKIKO TECH.
EIWA	MEIYO ELEC.	RIKEI KEIKI	SEMCO	TOKYO KEIKI
NAGANO KEIKI	NITTO SIEKO	SAGINOMIYA	SIEMENS	

PAN-ASIA HANLA LEVEL

JIANGSU YUANWANG INSTRUMENT

NORIS	AUTRONICA	ENDRESS+HAUSER	SIEMENS	ENRAF
VALCOM	VEGA	SIKA	LEUTERT	DANFOSS
SAUTER	◎ BROLICH			

► **DISASTER PREVENTION & LIFE PRESERVER**

AIR WATER	KOA KAKO	NOHMI BOSAI	OKI DENKI BHOSAI	YAMATO PROTEC
DRAEGER SAFETY JAPAN	NITTAN			

NK FIRE PROTECTION

KIDDE	APPOLO	SALWICO	DRAEGER	TYCO
DIANIMANT				

► **CHEMICAL / ADDITIVE**

KURITA	◎ MIURA	NIPPON YUKA KOGYO	UNITOR	ICHINEN CHEMICALS
◎ LUBRICON				

► **OTHERS**

◎ TOMOE VALVE	◎ OKM	HAGIWARA VALVE	MIYAIRI VALVE MFG	YUKEN KOGYO
ANCHOR/CHAIN	WIRE/ROPE	BERT/ROLLER(BELT CONVEYOR)	ALL SORTS OF PAINT	SET OF ARTICLES FOR SHIPS

HALLA AUTOMATIC VALVE

※Above are only part of our handling makers, please contact us for not-listed makers.



株式会社
N.Y. CO., LTD. SINCE 1976

エヌワイ
~ Make your ship Energetic! ~

With our dreams & hopes,
We keep moving forward!

